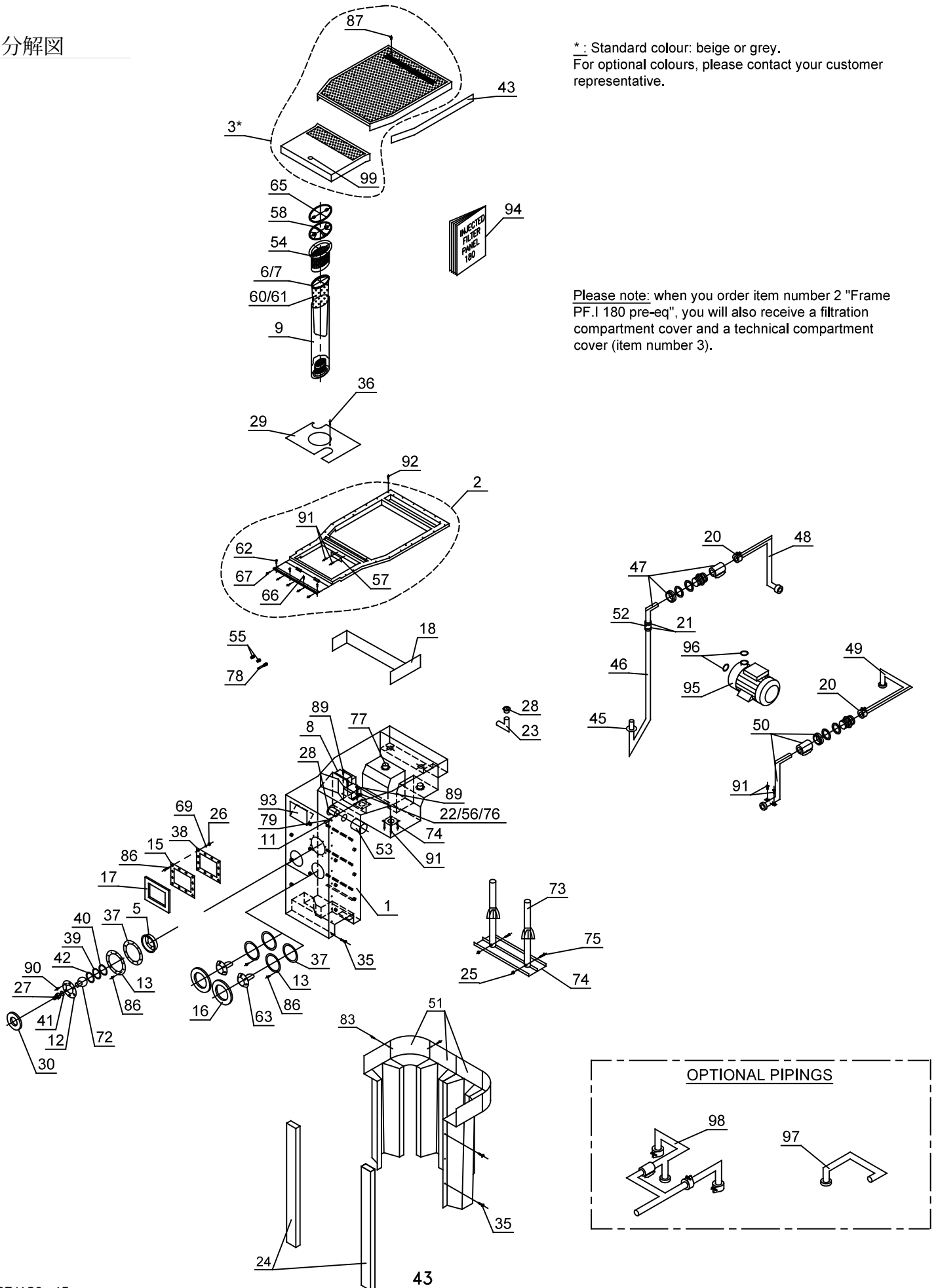


## 12. 分解図



\*: Standard colour: beige or grey.  
For optional colours, please contact your customer representative.

**Please note:** when you order item number 2 "Frame PF.I 180 pre-eq", you will also receive a filtration compartment cover and a technical compartment cover (item number 3).

**13. Nomenclature**

Revision 2.4 of 18/02/20 [02/09 -> ]

Item	Description	Qty	Code	Item	Description	Qty	Code
1	BODY PF.I 180	1	90209	51	CHIMNEY SUPPORT PF.I 180	1	90223
2	FRAME PF.I 180 PRE-EQ BEIGE	1	17629	52	SLEEVE D63 MM	1	01747
3	SOUNDPROOF COVER PF.I 180 BEIGE	1	22325	53	SLEEVE DRAINAGE PVC D.50 MM	1	01703
	SOUNDPROOF COVERS PF.I 180 GREY	1	22767	54	BASKET WHITE BOWL TOP BOUTIQUE	1	19666
4				55	CG ISO 20 + NUT + SEAL PF.I	2	19225
5	BASE NOZZLE SUPPORT	1	90213	56	CG 9+COMPLETE FAST SYSTEM	1	09664
6	RING BAG EXT BOUTIQUE	1	19688	57	ID PLATE PF.I 180-181	1	90225
7	RING BAG INT BOUTIQUE	1	19687	58	SKIM VAC BRUSH SOCKET BOUTIQUE	1	19689
8	CONNECT BOX GR.R 150-PF.I 180	1	01602	59			
9	BOWL INJ H 780 MM W/O BASKET	1	19536	60	FILT BAG 15 MIC BOUTIQUE	1	19694
10				61	FILT BAG 6 MIC BOUTIQUE	1	19695
11	PNEU BUTTON WHITE	1	09074	62	LINER LOCK 100 ML	0.5ML	10159
12	FLANGE NOZZLE WHITE	1	09020	63	JD POOL LED WHITE PF.I BOUTIQUE	2	19445
13	FLANGE DISC. PF.I-PF-R / SPOTLIGHT 50W P	3	08981	64			
14				65	SKIM VAC REGULATOR BOUTIQUE	1	19690
15	FLANGE SKIMMER 190X143 MM	1	08980	66	RIVET SS 4X12	4	09751
16	FLANGE COVER DISC PF.R / SPOTLIGHT 50W P WHITE	2	90201	67	WHITE RIVET PLASTIC FRAME PF.I	5	90229
17	FLANGE COVER SKIMMER 190X143 MM WHITE	1	90202	68			
18	CALE PF.I 180 NIMP15	1	90241	69	LOCKWASHER FAN-TYPE SS A4 D.6	42	09397
19				70	FLAT WASHER Ac Zn 8X30 XL	41	09649
20	CLAMP FLEXIBLE D 75 MM	2	09837	71			
21	CLAMP SS D63 MM	2	01750	72	NOZZLE JOINT WHITE	1	09021
22	CONNECTOR MF 2 PIN RED	1	09090	73	ADJUSTABLE LEG ASSY SUPPORT PF	2	24937
23	ELBOW PVC D.50 FF 90°	1	01701	74	LEG ASSY RAIL TECH COMP PF.I 180	1	24991
24	DESCO 0.13 M RE	2	01038	75	SCREW ST ZN TH 8X80 MM F30	4	20441
25	NUT Ac Zn M8	24	09651	76	TRANSFO SEALED 2X50 VA	1	20651
26	NUT SS A4 M6	43	09026	77	WALL FEEDTHROUGH BY PASS STANDARD	2	90035
27	DRAIN CONNECTION	1	01749	78	CG 7 LONG COVER+NUT+SEAL	1	18595
28	NOZZLE SLICK D.50 MALE TO BE GLUED	2	90110	79	TUBE CLEAR 0.003	1.02ML	09075
29	SPACER BOWL PF.I 180	1	90216	80			
30	FLANGE COVER DISC LINER PF.I	1	19287	81			
31				82	SCREW Ac Zn TH 8X30	20	09650
32				83	SCREW SELF-TAPPING AC ZN HEX HEAD 4.2X19	4	09897
33				84			
34				85			
35	SCREW Ac Zn TCB 6X20+IMPERDABLE WASHER	22	18594	86	SCREW SS A4 CSK 6X30 POZIDRIVE	42	09793
36	BOWL LOCKING PIN	1	08921	87	SCREW SS A4 PANHEAD 8x20 SLOTTED	4	09019
37	SEAL FLANGE DISC. PF.I-PF-R / SPOTLIGHT 50W	3	08978	88			
38	SEAL FLANGE SKIMMER PF.I 180	1	08979	89	SCREW SELF-TAPPING SS A4 PANHEAD 5.5x19 POZIDRIVE	5	09794
39	SEAL NOZZLE JOINT 73X60 THK 1.5MM	2	09817	90	SCREW SELF-TAPPING SS A4 CSK 5.5x25.4 POZIDRIVE	6	09797
40	SEAL NOZZLE JOINT 73X60 THK 9 MM	1	09586	91	WOOD SCREW A2 CSK 4x20 POZIDRIVE	12	16719
41	SEAL CONNECT DRAIN 43X34 THK 5 MM	1	09818	92	WOOD SCREW A4 CSK 5x40 POZIDRIVE	22	90237
42	SEAL NOZZLE JOINT SPHERICAL	1	09024	93	SKIMMER WEIR 190X143 MM PF.I 180	1	90238
43	GASKET NEOPRENE	1	02010	94	DOC TECH PF.I 180	1	90215
44				95	PUMP	1	
45	SEAL BOTTOM BOWL D75 MM	1	09761	96	O-RING D 67 THK 4 MM	2	09022
46	PIPE INT LW FILT PF.I 180-181-GR.I 181	1	95220	97	ADAPT LASER GR.I-PF.I 180	1	90259
47	PIPE INT UP FILT PF.I 180	1	25034	98	BY-PASS GR.I-PF.I 180	1	90258
48	PIPE INT TECH PF.I 180	1	90222	99	LOCKING PARTS COVER FILT BEIGE	1	17977
49	PIPE DISC TECH GR.I-PF.I 180-PF.R 250-180	1	08938	100	LOCKING PARTS COVER FILT GREY	1	23074
50	PIPE DISC FILT PF.I 180	1	90263				